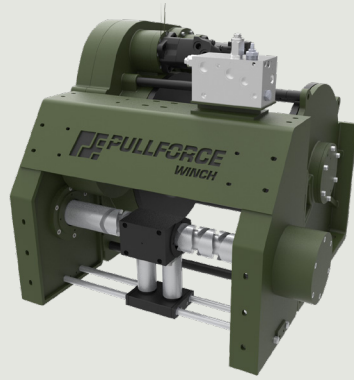




## Description

Double speed towing and recovery winch for commercial and service vehicles. This model has a rigid planetary gear, disc brake system, automatic roller fairlead and ductile iron body ready for challenging tasks. Different configurations are available upon request. Fully compliant with **EN 14492**. Additional equipment and accessories are available as well.



## Specifications

Maximum Pulling Capacity	: 40000 kg / 88148 lbs
Maximum Rope Length	: 85 m / 278.8 ft
Recommended Wire Rope	: Ø28 mm / Ø10/9"
Hydraulic Motor (High Torque)	: 130 cc x 2 / 7.93 in <sup>3</sup> x 2
Maximum Pump Flow Rate	: 75 l/min / 19.81 gal/min
Max Working Pressure	: 200 bar / 2900 psi
Weight	: 775 kg / 1708 lbs

## Additional Equipment

### Standard package:

- Rope
- Pressure roller
- Pneumatic freespool
- Double speed working mode
- Automatic roller fairlead
- Hydraulic inlet G 1/2"

### Optional:

- Radio control system
- ECU & IQAN equipment
- M20 mounting bolts
- Hydraulic control valve with manual lever

## Line Pull and Line Speed Performance

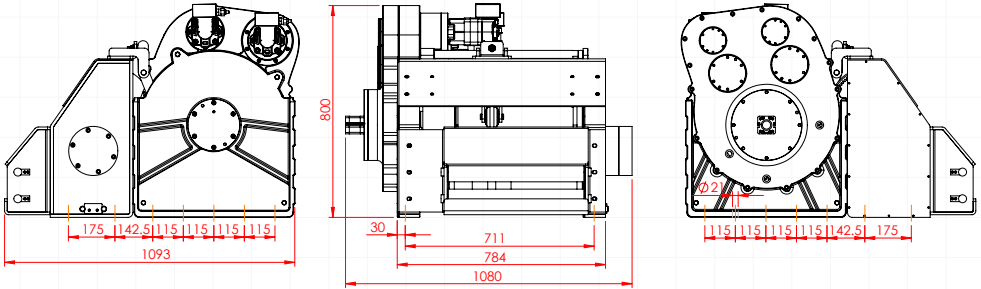
Winding layer	Pulling capacity (kg / lbs)	Rope speed (m/min - ft/min)	Rope length (m/ft)
1	40000 / 88185	2.86 / 9.39	17.4 / 57.2
2	34210 / 75420	3.34 / 10.97	37.8 / 124.2
3	29884 / 65883	3.83 / 12.56	61.2 / 200.8
4	26529 / 58487	4.31 / 14.15	87.5 / 287.2



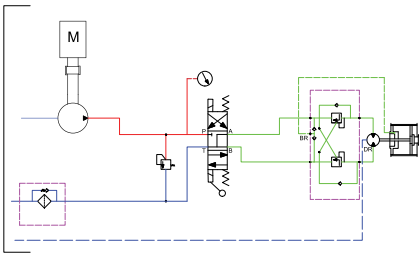
*These winches should not be used for lifting and there should be at least 5 wraps of wire rope on the drum. The data shown are for maximum pressure and maximum flow and should be used as a reference only.*

*PULLFORCE reserves the right to change the specified data without prior notice.*

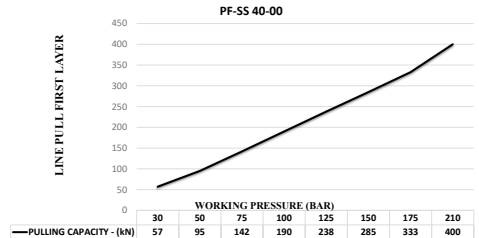
## Dimensions



## Hydraulic Circuit



## Hydraulic Performance



## Features

- Gear reduction :** 110:1
- Gear type :** Single stage planetary with specially designed gear system
- Winch construction :** Ductile iron body reinforced with heat-treatment
- Braking :** Negative hydraulic disc brake system
- Drum rotation :** Clockwise, or counter clockwise rotation as required
- Roller guides :** Commercial type with large diameter rollers and grease ways
- Free spooling :** Standard pneumatic freespool
- Control valve :** The direction control valves to be used must be A, B, and T. The A and B lines must be open to the T (Tank) line.

## Application Areas



Heavy-Duty  
Tow Trucks



Low-Bed  
Semi-Trailers



Towing and  
Recovery Vehicles



Trailers



Offroad Trucks



Each new winch is guaranteed against defects in workmanship and material defects for a period of 24 months from date of purchase. Wire ropes are not included under warranty.