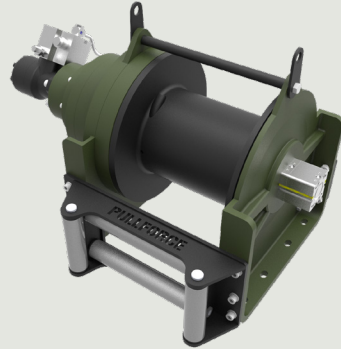




Description

Towing and recovery winch for commercial and service vehicles with a vertically positioned motor. This model has a rigid planetary gear, disc brake system and ductile iron body ready for challenging tasks. Different configurations are available upon request. Fully compliant with **EN 14492**. Additional equipment and accessories are available as well.



Specifications

Maximum Pulling Capacity	: 18000 kg / 39683 lbs
Maximum Rope Length	: 43 m / 141 ft
Recommended Wire Rope	: Ø20 mm / Ø25/32"
Hydraulic Motor	: 250 cc / 15.25 in ³
Maximum Pump Flow Rate	: 60 l/min / 15.85 gal/min
Max Working Pressure	: 175 bar / 2538 psi
Weight	: 205 kg / 452 lbs

Additional Equipment

Standard package:

- Rope
- Roller fairlead
- Pressure roller
- Pneumatic freespool
- Hydraulic inlet G 1/2"

Optional:

- Radio control system
- ECU & IQAN equipment
- M14 mounting bolts
- Hydraulic control valve with manual lever

Line Pull and Line Speed Performance

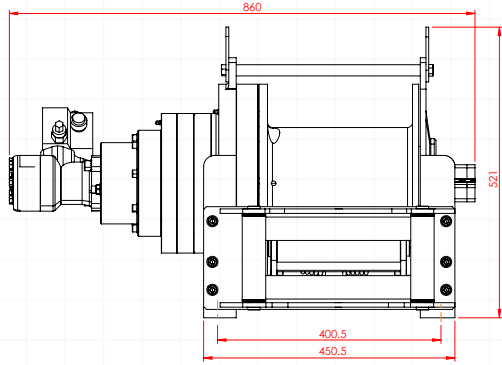
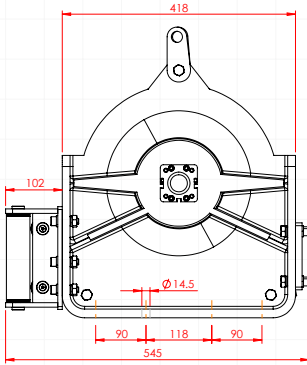
Winding layer	Pulling capacity (kg / lbs)	Rope speed (m/min - ft/min)	Rope length (m/ft)
1	18000 / 39683	4.04 / 13.25	8.3 / 27.3
2	15125 / 33346	4.80 / 15.76	18.2 / 59.8
3	13043 / 28754	5.57 / 18.28	29.7 / 97.5
4	11464 / 25274	6.34 / 20.80	42.8 / 140.4



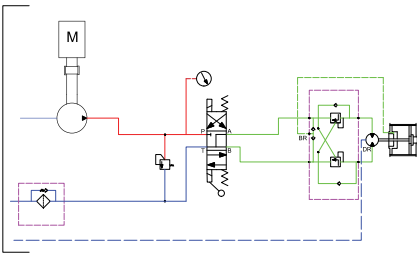
These winches should not be used for lifting and there should be at least 5 wraps of wire rope on the drum. The data shown are for maximum pressure and maximum flow and should be used as a reference only.

PULLFORCE reserves the right to change the specified data without prior notice.

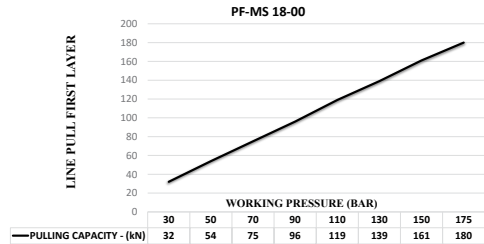
Dimensions



Hydraulic Circuit



Hydraulic Performance



Features

- Gear reduction : 41.25:1
- Gear type : Two stage planetary
- Winch construction : Ductile iron body reinforced with heat-treatment
- Braking : Negative hydraulic disc brake system
- Drum rotation : Clockwise, or counter clockwise rotation as required
- Roller guides : Commercial type with large diameter rollers and grease ways
- Free spooling : Standard pneumatic freespool. Optional pneumatic freespool
- Control valve : The direction control valves to be used must be A, B, and T. The A and B lines must be open to the T (Tank) line.

Application Areas



Towing and Recovery Vehicles



Heavy Tow Trucks



Agricultural and Forestry Vehicles



Military Vehicles



Trailers



Each new winch is guaranteed against defects in workmanship and material defects for a period of 24 months from date of purchase. Wire ropes are not included under warranty.