



Description

Towing and recovery winch for commercial and service vehicles with a vertically positioned motor. This model has a rigid planetary gear, disc brake system and ductile iron body ready for challenging tasks. Different configurations are available upon request. Fully compliant with **EN 14492**. Additional equipment and accessories are available as well.



Specifications

Maximum Pulling Capacity	: 15000 kg / 33069 lbs
Maximum Rope Length	: 51 m / 167 ft
Recommended Wire Rope	: Ø18 mm / Ø7/10"
Hydraulic Motor	: 250 cc / 15.2 in ³
Maximum Pump Flow Rate	: 60 l/min / 15.8 gal/min
Max Working Pressure	: 175 bar / 2537 psi
Weight	: 188 kg / 407.85 lbs

Additional Equipment

Standard package:

- Rope
- Roller fairlead
- Pressure roller
- Pneumatic freespool
- Hydraulic inlet G 1/2"

Optional:

- Radio control system
- ECU & IQAN equipment
- M16 mounting bolts
- Hydraulic control valve with manual lever

Line Pull and Line Speed Performance

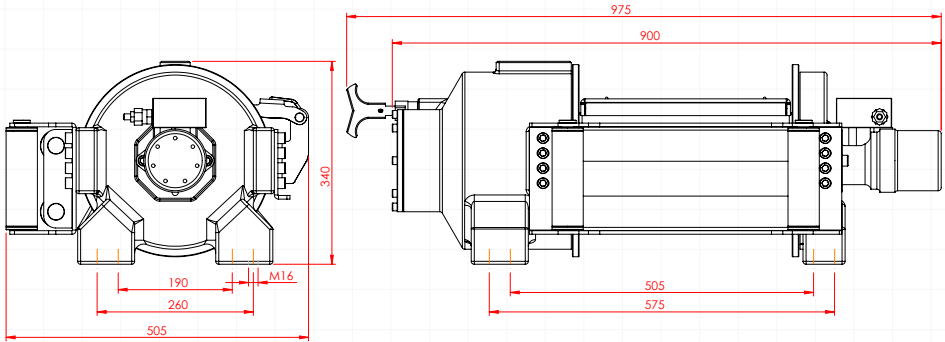
Winding layer	Pulling capacity (kg / lbs)	Rope speed (m/min - ft/min)	Rope length (m/ft)
1	15000 / 33069	4.5 / 14.9	9.5 / 31.3
2	12257 / 27022	5.6 / 18.2	21.2 / 69.6
3	10362 / 22844	6.6 / 21.6	35.1 / 115
4	8974 / 19785	7.6 / 24.9	51 / 167.3



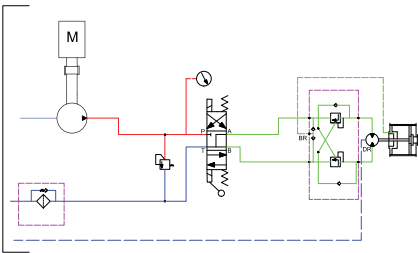
These winches should not be used for lifting and there should be at least 5 wraps of wire rope on the drum. The data shown are for maximum pressure and maximum flow and should be used as a reference only.

PULLFORCE reserves the right to change the specified data without prior notice.

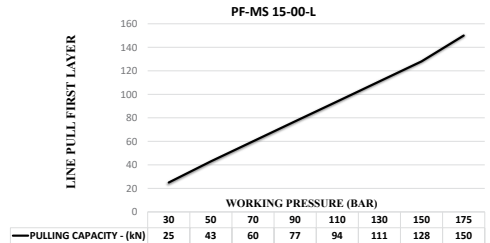
Dimensions



Hydraulic Circuit



Hydraulic Performance



Features

- Gear reduction : 28 : 1
- Gear type : Two stage planetary
- Winch construction : Ductile iron body reinforced with heat-treatment
- Braking : Negative hydraulic disc brake system
- Drum rotation : Clockwise, or counter clockwise rotation as required
- Roller guides : Commercial type with large diameter rollers and grease ways
- Free spooling : Standard pneumatic freespool. Optional pneumatic freespool
- Control valve : The direction control valves to be used must be A, B, and T. The A and B lines must be open to the T (Tank) line.

Application Areas



Towing and Recovery Vehicles



Heavy Tow Trucks



Agricultural and Forestry Vehicles



Military Vehicles



Trailers



Each new winch is guaranteed against defects in workmanship and material defects for a period of 24 months from date of purchase. Wire ropes are not included under warranty.