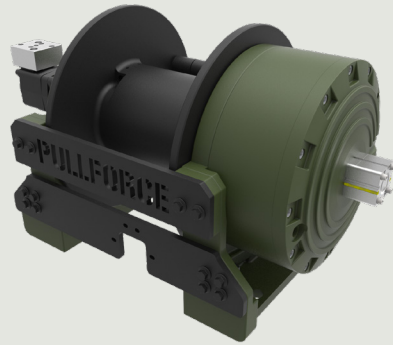




Description

Towing and recovery winch for commercial and service vehicles. This model has a rigid planetary gear, disc brake system and ductile iron body ready for challenging tasks. Different configurations are available upon request. Fully compliant with **EN 14492**. Additional equipment and accessories are available as well.



Specifications

Maximum Pulling Capacity	: 25000 kg / 55115 lbs
Maximum Rope Length	: 60 m / 196.8 ft
Recommended Wire Rope	: Ø24 mm / Ø15/16"
Hydraulic Motor (High Torque)	: 315 cc / 19.2 in ³
Maximum Pump Flow Rate	: 75 l/min / 19.81 gal/min
Max Working Pressure	: 200 bar / 2900 psi
Weight	: 345 kg / 760.5 lbs

Additional Equipment

Standard package:

- Rope
- Roller fairlead
- Pressure roller
- Pneumatic freespool
- Hydraulic inlet G 1/2"

Optional:

- Radio control system
- ECU & IQAN equipment
- Double speed working mode
- Automatic roller fairlead
- M20 mounting bolts
- Hydraulic control valve with manual lever

Line Pull and Line Speed Performance

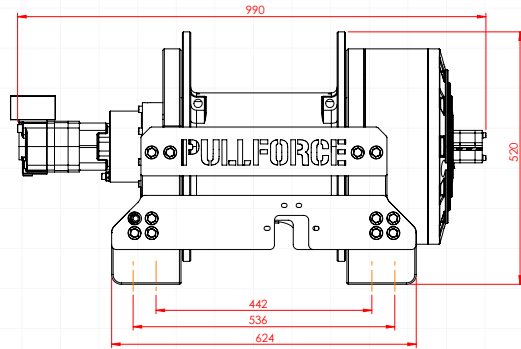
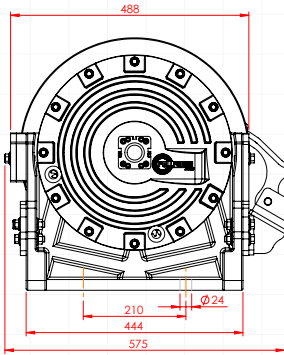
Winding layer	Pulling capacity (kg / lbs)	Rope speed (m/min - ft/min)	Rope length (m/ft)
1	25000 / 55116	2.9 / 9.5	8.5 / 27.8
2	20737 / 45718	3.5 / 11.5	18.7 / 61.3
3	17717 / 39059	4.1 / 13.4	30.6 / 100.5
4	15464 / 34093	4.7 / 15.4	44.3 / 145.4
5	13720 / 30247	5.3 / 17.4	60 / 196.8



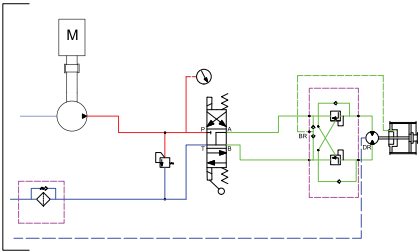
These winches should not be used for lifting and there should be at least 5 wraps of wire rope on the drum. The data shown are for maximum pressure and maximum flow and should be used as a reference only.

PULLFORCE reserves the right to change the specified data without prior notice.

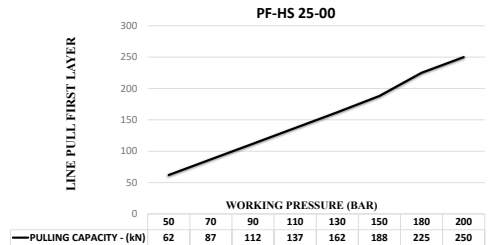
Dimensions



Hydraulic Circuit



Hydraulic Performance



Features

- Gear reduction : 49.7:1
- Gear type : Two stage planetary
- Winch construction : Ductile iron body reinforced with heat-treatment
- Braking : Negative hydraulic disc brake system
- Drum rotation : Clockwise, or counter clockwise rotation as required
- Roller guides : Commercial type with large diameter rollers and grease ways
- Free spooling : Standard pneumatic freespool
- Control valve : The direction control valves to be used must be A, B, and T. The A and B lines must be open to the T (Tank) line.

Application Areas



Heavy-Duty
Tow Trucks



Low-Bed
Semi-Trailers



Towing and
Recovery Vehicles



Trailers



Offroad Trucks



Each new winch is guaranteed against defects in workmanship and material defects for a period of 24 months from date of purchase. Wire ropes are not included under warranty.