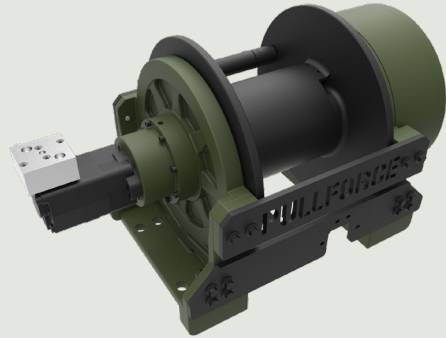




## Description

Towing and recovery winch for commercial and service vehicles. This model has a rigid planetary gear, disc brake system and ductile iron body ready for challenging tasks. Different configurations are available upon request. Fully compliant with **EN 14492**. Additional equipment and accessories are available as well.



## Specifications

Maximum Pulling Capacity	: 22000 kg / 48501 lbs
Maximum Rope Length	: 63 m / 206 ft
Recommended Wire Rope	: Ø22 mm / Ø7/8"
Hydraulic Motor (High Torque)	: 250 cc / 15.2 in <sup>3</sup>
Maximum Pump Flow Rate	: 75 l/min / 19.81 gal/min
Max Working Pressure	: 200 bar / 2900 psi
Weight	: 340 kg / 749.5 lbs

## Additional Equipment

**Standard package:**

- Rope
- Roller fairlead
- Pressure roller
- Pneumatic freespool
- Hydraulic inlet G 1/2"

**Optional:**

- Radio control system
- ECU & IQAN equipment
- Double speed working mode
- Automatic roller fairlead
- M20 mounting bolts
- Hydraulic control valve with manual lever

## Line Pull and Line Speed Performance

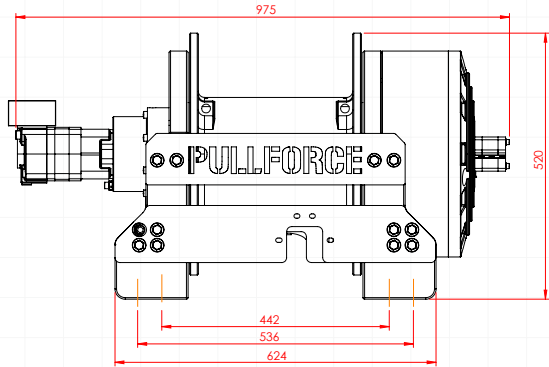
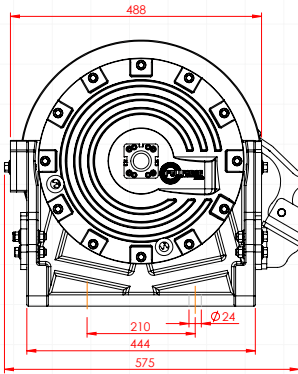
Winding layer	Pulling capacity (kg / lbs)	Rope speed (m/min - ft/min)	Rope length (m/ft)
1	20000 / 48502	4.6 / 15.1	9.2 / 30.1
2	18487 / 40756	5.5 / 18	20.1 / 65.8
3	15941 / 35144	6.4 / 20.9	32.7 / 107.3
4	14012 / 30890	7.2 / 23.7	47.1 / 154.5
5	12499 / 27555	8.1 / 26.6	63.2 / 207.4



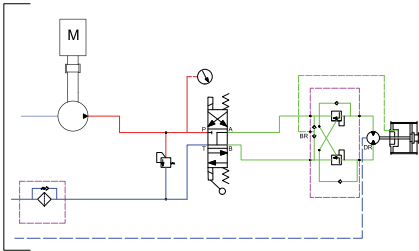
*These winches should not be used for lifting and there should be at least 5 wraps of wire rope on the drum. The data shown are for maximum pressure and maximum flow and should be used as a reference only.*

*PULLFORCE reserves the right to change the specified data without prior notice.*

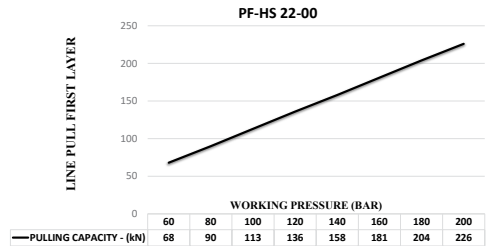
## Dimensions



## Hydraulic Circuit



## Hydraulic Performance



## Features

- Gear reduction : 49.7:1
- Gear type : Two stage planetary
- Winch construction : Ductile iron body reinforced with heat-treatment
- Braking : Negative hydraulic disc brake system
- Drum rotation : Clockwise, or counter clockwise rotation as required
- Roller guides : Commercial type with large diameter rollers and grease ways
- Free spooling : Standard pneumatic freespool
- Control valve : The direction control valves to be used must be A, B, and T. The A and B lines must be open to the T (Tank) line.

## Application Areas



Heavy-Duty  
Tow Trucks



Low-Bed  
Semi-Trailers



Towing and  
Recovery Vehicles



Trailers



Offroad Trucks



Each new winch is guaranteed against defects in workmanship and material defects for a period of 24 months from date of purchase. Wire ropes are not included under warranty.